

UNIFORM SPECIFICATION – FOR FIRST YEARS

Food Production & Bakery Practical:

a. Chef coat: 2 nos



Colour – white, Material: Drill, sanforized, Tailoring: With overlap in front. Deep narrow pocket in front and on one sleeve. Refer sketch.

b. Black Pants (2 nos)- Formals (pencil fit, low waste, etc. are not allowed)

c. Apron (2 nos) – White Drill Material. Sanforized.

d. Scarf (2 nos): Triangular –Red and White Checked 90 cms × 60 cms × 60 cms.



e. Chef cap(2 nos) - Pleated cloth chef cap



f. Black socks.(4-nos)- Cotton or Woolen



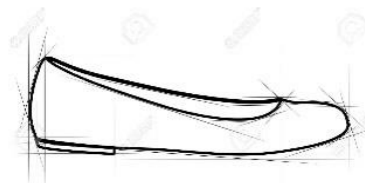
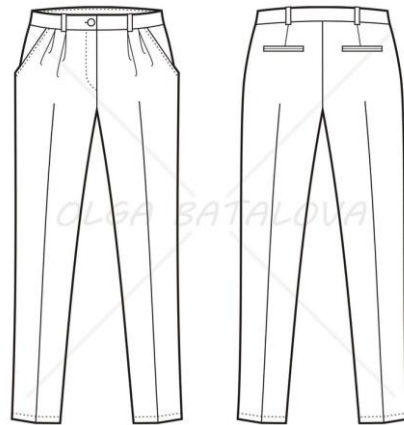
g. Black Safety shoes

h. Kitchen cloth(2 nos)– white cotton

- i. **Kitchen Cleaning cloth (2 nos)**– Green & White Checked Cotton
- j. **Tool kit (Refer Format D)**

F&B Service Practical:

- a. **Pants(one)**: Black Suiting. Formal. Straight cut with a Pleat on either side. Side pockets and back pockets
- b. **Black half apron (one)**- with front pocket
- c. **White full sleeved shirt(2 nos)**
- d. **Black bow tie(One)**
- e. **Waiter’s cloth – 2 nos**
- f. **Serviettes** – Damask white 45 cms * 45 cms – **4 nos.**
- g. **Black socks**
- h. **Black Oxford Shoes** (Boys) Closed **shoes** – not more than 2-inch heel (Girls)
- i. **Bottle Opener(one)**
- j. **Lighter(one)**



Front Office Practical :

- a) **Black pants(as for F& B Service),**
- b) **White full sleeved shirt (as for F& B Service),**
- c) **Black oxford shoes (as for F& B Service),**
- d) **Black socks. (as for F& B Service),**
- e) **Black Tie.(one)**

Accommodation Operation Practical:

- a) **White full sleeved shirt, (as for F& B Service),**
- b) **Black pants (as for F& B Service),**
- c) **Black oxford shoes (Black socks)(as for F& B Service),**
- d) **Apron with a pocket in front (12 inches wide, 6 inches high),**
- e) **** Dusters (blue and white check) 1 no**



** Issued from the Institute

Students are expected to be in their respective uniforms during class hours.

Girls: have the option of wearing knee length formal black skirt (A-line) with black stockings instead of pants for F & B Service Practical. Closed shoes with not more than 2 inch heel.

Yoga Uniform (for boys & girls)

- White round-necked T-Shirt**
- Black track pants**

**Girls also will be required to buy a saree at a later date.
